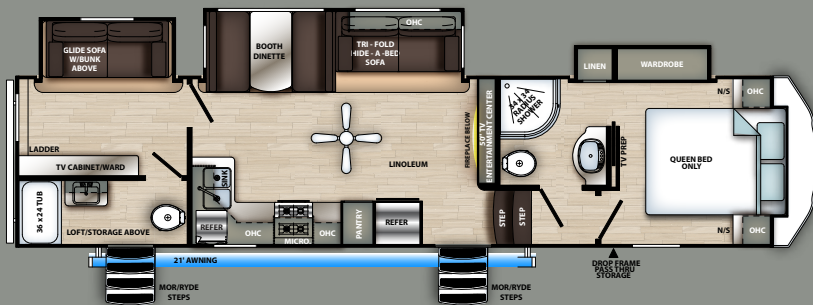


# Sandpiper

C-CLASS III

FIFTH  
WHEELS





# 3330BH

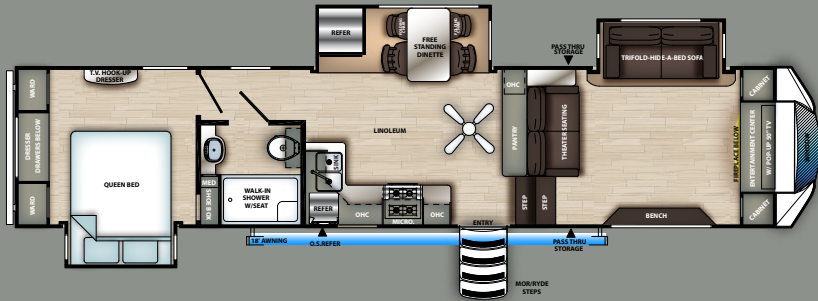
*Featuring Fog Decor*

## BUILT FOR FAMILY FUN

This bunkhouse floorplan offers something for the whole family. Our 3330BH C-Class edition offers a full rear bunk loft and two full size bathrooms with tub shower. With sleeping for up to twelve, this unit surprisingly doesn't sacrifice living space for sleeping quarters. This model is equipped with a full pantry, and a beautiful entertainment system that the whole family will love to gather around.







# 3550FL

*Featuring Fog Decor*

## AT HOME ON THE ROAD

Our 3550FL C-Class edition has the same luxurious layout as our original front living floorplan at a fraction of the cost. Boasting one of the largest front cap windows in the industry, this beautiful coach offers the perfect front view. The entertainment center of the 3550FL model is second to none with a standard pop up 50" flat screen TV and oversized fireplace for all your entertaining needs. The full walk in shower with an overabundance of headroom is something every outdoor enthusiast should not go without.





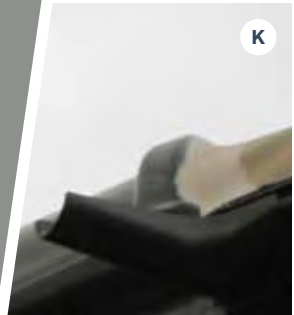
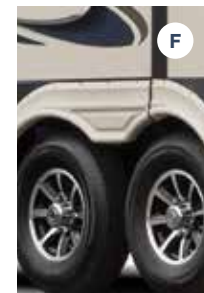
# Interior Features

- A** Handcrafted fascia gives the slide-out a distinguished look
- B** Porcelain foot flush toilet, easy to use, easy to clean
- C** Designer sink faucet with pull-out sprayer and stainless undermount sink
- D** LED accent lighting at toe kick for increased visibility at night
- E** LED HDTV with premium soundbar
- F** Mocha accented crown molding gives the Sandpiper Kitchen a truly residential finish
- G** Real wood drawers on soft close, full extension, ball bearing drawer guides
- H** The Sandpiper C-Class Signature package includes stainless steel appliances
- I** Enjoy the warmth and comfort of the electric fireplace
- J** Contemporary ceiling fan
- K** Upgraded master bedroom headboard with integrated LED lighting (Per floorplan)
- L** Interior handrail to upper deck for added safety.



# Exterior Features

- A Oversized grab handle at main entry door
- B Newly designed front cap, select models feature a tinted window.
- C 4 point electric Level-Up front jacks (6 point 3550FL)
- D MOR/ryde low rise fold in entry steps
- E Locking LP Bottle storage
- F 16" Radial tires – E Rated
- G Command center control panel for operating slides, monitoring tank levels and controlling lighting
- H Sandpiper's lighted docking station
- I 110v outlet and cable outlet conveniently located in the pass-thru storage area
- J Underbelly Armour full coach underbelly protection
- K Drip rail with extra long drip spouts help prevent black streaking
- L Gel coat fiberglass protects from UV rays and prevents yellowing and cracking prevent black streaking



# Standards, Packages and Optional Features

## EXTERIOR FEATURES

- 4 point electric level up system (6 point 3550FL)
- Quad MOR/ryde step
- Color match high gloss gel coated colored exterior fiberglass
- Painted two tone aerodynamic fiberglass front cap with improved turning radius
- Underbelly Armor
- Enclosed and heated dump valves
- 16" Spare tire kit
- Large tinted windows with 80/20 UV prohibitor
- "One Touch" Dometic® electric awning w/LED light strip
- Roof ladder
- Power front jacks with spring loaded snap pins
- 16" Radial tires-E Rated
- Automotive-style fender skirts
- Hitch light
- Porch light with interior switch
- 30 lb. double LP tanks with auto change over
- 2 exterior speakers
- Rain gutters with extra long drip spouts (prevents black streaking)
- Insulated heavy duty slam lock baggage doors
- Exterior foldable grab handle
- Unobstructed pass thru area
- Upgraded aluminum rims
- Friction hinge entry door

## INTERIOR FEATURES

- Stainless steel appliances
- Rustic wood plank linoleum
- Decorative backsplash
- Two color coordinated interiors (Flint, Fog)
- Soft close full extension drawer glides
- Stainless steel under mounted kitchen sink
- LED lighting throughout
- Solid surface countertops
- Recessed residential lighting
- Accent lighting over dinette
- Mocha accent crown molding over kitchen cabinets
- Extra large picture windows throughout
- Vented side windows in slideouts
- TV antenna with booster
- Solid wood drawer fronts with birch sides
- Upgraded raised panel cabinet doors with designer rails
- Bedroom slideout fascia
- Pillow top mattress
- Teddy Bear® bunk mats
- 40"/50" flatscreen TV (per floorplan)
- Premium soundbar with built in DVD player
- Designer window treatment accented per decor
- Ceiling fan
- Tri-fold hide-a-bed sofa
- Residential stain resistant carpet
- Quilted bedspread

## APPLIANCES / SYSTEMS

- High Performance 15K A/C (second A/C prep)
- 10.7 cu. ft. refrigerator
- Digital thermostat for living room and A/C
- Floor ducted 35,000 BTU furnace
- OTR stainless steel microwave
- Three burner high output range with 22" oven
- Interior monitor panel for holding tanks
- Satellite and cable hookup with RG-6 cable for high quality picture
- Porcelain foot flush toilets
- 10 Gal. DSI water heater
- 65 Amp converter
- Power fan bathroom(s)

## CONSTRUCTION

- Welded aluminum-framed, vacuum bonded laminated superstructure
- 3/8" roof decking (full walk-on roof)
- Cambered powder coated frame with rust prohibitor
- Fully enclosed underbelly
- 5" truss roof rafters
- R-10E sidewall construction
- Laminated sidewalls
- Laminated slideout walls

## FOR YOUR SAFETY

- Smoke alarm
- Fire extinguisher
- Breakaway switch (battery hook-up required)
- Dead-bolt lock on entry door
- LP/CO2 gas detector
- Fire escape windows

## POPULAR OPTIONS

- Second 15K air conditioner in bedroom (ducted)
- Heated holding tanks (12V)
- Zamp roof mounted solar prep
- Central vacuum
- Slide room awnings (all slides)
- 9 cu. ft. gas/electric refer

## POLAR TECH PACKAGE (OPTIONAL)

- Thermal pane windows
- Heated holding tanks
- 40K BTU furnace

## PLATINUM PACKAGE

(STANDARD - Limited Time Offer)

- Roller shades throughout
- Premium range w/glass cover
- King wi-fi extender system
- 16" Spare tire kit
- Roof ladder
- Electric leveling system
- High efficiency radiant foil (roof + floor)
- 3 Camera security prep
- Backup camera prep
- MOR/ryde entry step with strut

## SANDPIPER C-CLASS SIGNATURE PACKAGE (STANDARD)

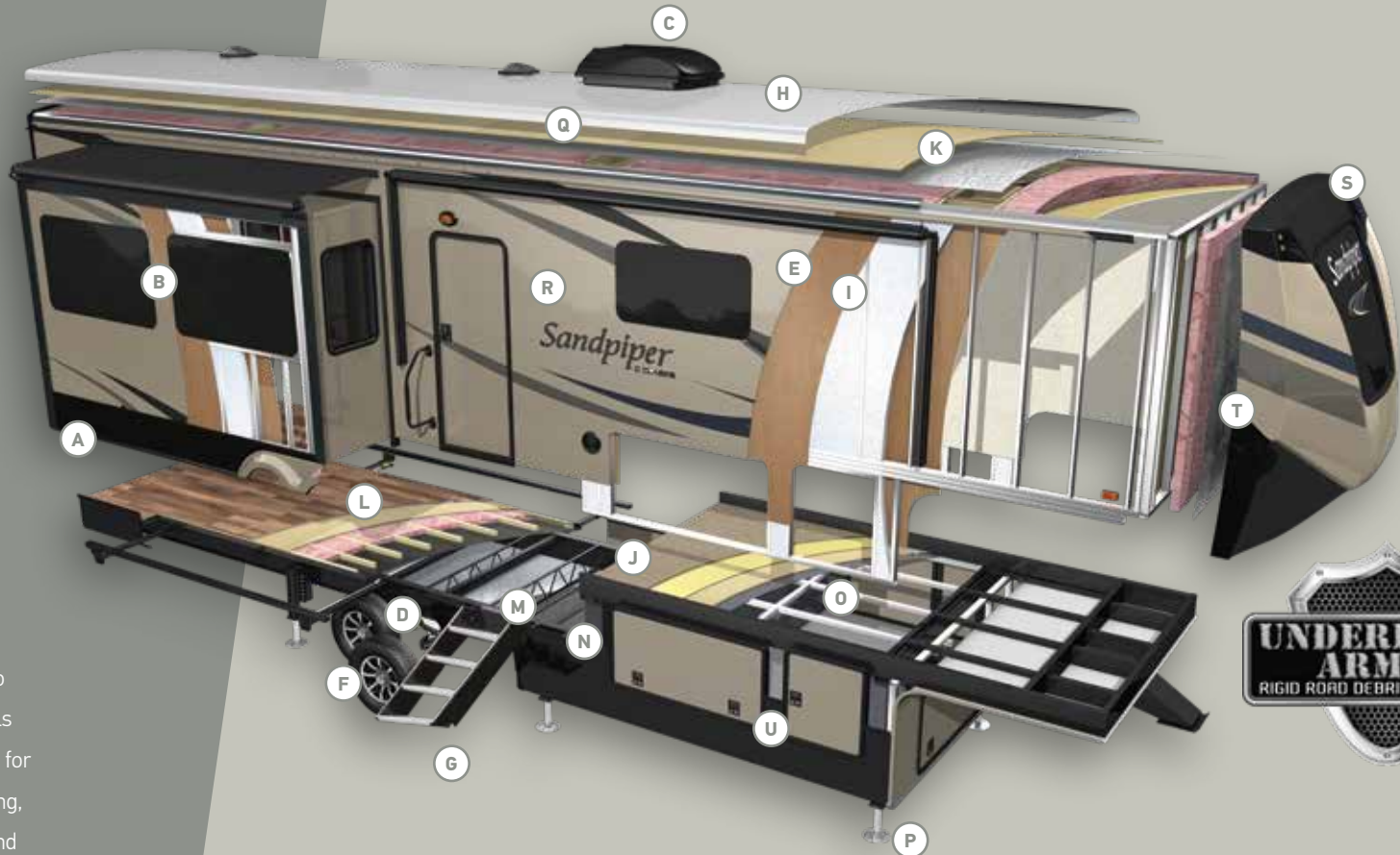
- Underbelly Armor
- 10.7 cu. ft. 12V Stainless refer
- Stainless appliance package
- Memory foam mattress
- 30" OTR microwave
- Kitchen backsplash
- Soft close residential drawers & cabinet doors
- Docking station
- Color matched gelcoated fiberglass exterior
- 40" Flat screen television (most models)
- Premium sound bar with dvd
- Power fan in bathroom(s)
- Tri fold hide-a-bed sofa
- "One touch" Dometic electric awning w/LED light strip
- LED interior lighting throughout
- Slam lock baggage doors
- 15K air conditioner w/prep for second A/C
- Residential kitchen faucet
- Aluminum wheels
- Water filter system
- Shaw linoleum and carpet
- Aerodynamic two tone painted fiberglass front cap
- 10 Gal dSI water heater
- 2 folding dinette chairs (N/A with booths)



# C-CLASS III

## Superior Construction

- A** Rolled Aluminum Side Skirting
- B** Tinted Safety Glass Windows (80%)
- C** Dual Zone Ducted 15K BTU Air Conditioning
- D** 6,000 Lb. Axles with Auto Adjust Brakes
- E** Laminated Vacuum Bonded Aluminum Sidewalls
- F** 16" E-rated Radial Tires (standard)
- G** MOR/ryde Entry Steps
- H** Color Matched Seamless Rubber Roof (12-yr. Warranty)
- I** 2" Block Foam Insulation
- J** Deluxe Stain Resistant Carpet with Padding
- K** 3/8" Roof decking (Full Walk-on Roof)
- L** 5/8" Tongue and Groove Plywood Flooring
- M** Underbelly Armor full length underbelly protection



### Built to Last

The Sandpiper C-Class is built to last using only the best materials to ensure that your coach is in it for the long haul. Careful engineering, well appointed craftsmanship and an uncompromising sense of pride go into every fifth wheel that we produce. Rest assured that your Sandpiper is built for luxury living.

- N** I-Beam Powder-Coated Frame with Rust Inhibitor
- O** Aluminum, Insulated Bath Deck
- P** 4-Point Electric Level Up System (6-Point 3550FL)
- Q** Sleek Radius Roof
- R** Painted Color Matched high gloss Gel-coated Fiberglass Exterior
- S** Two-tone Painted Gel-coated Fiberglass Front Cap (Standard)
- T** Improved Front Cap for Sharper Turning Radius
- U** Insulated Slam Lock Baggage Doors



# Floorplans

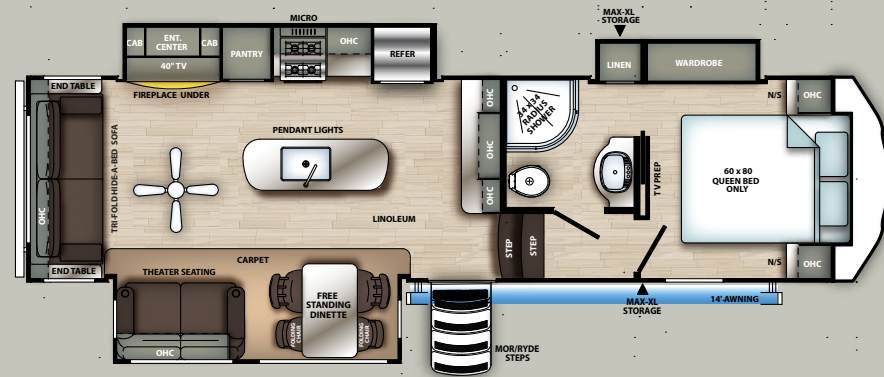
Find Your Perfect Match

## SOMETHING FOR EVERYONE

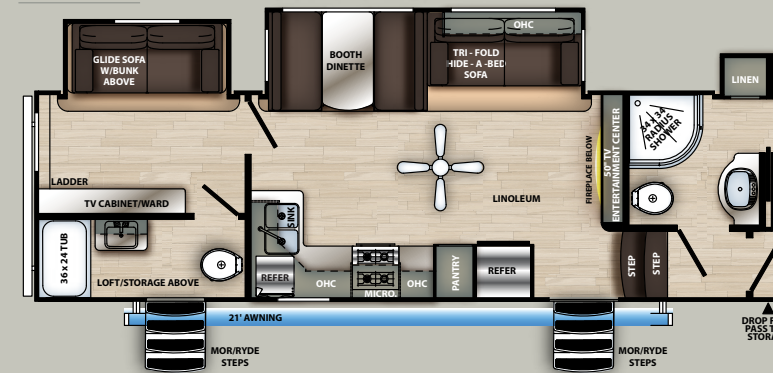
Wherever you go, the Sandpiper lineup will ensure you make the most out of every adventure. Unique floorplan designs like bunkhouses, front living spaces or rear living/entertainment will accommodate any traveler or group. Luxurious features like premium hardwood accents, stainless steel appliances, and patent pending Underbelly Armor, give the Sandpiper a reputation of elegance and outstanding quality.



## 2990TRIK



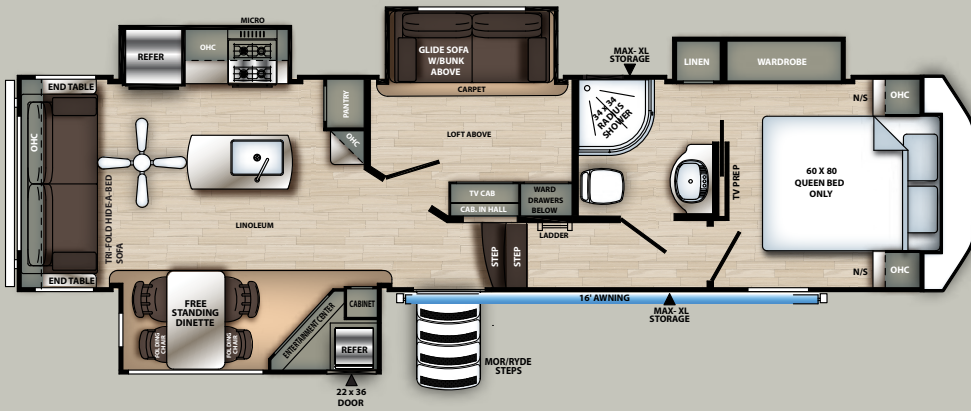
## 3330BH



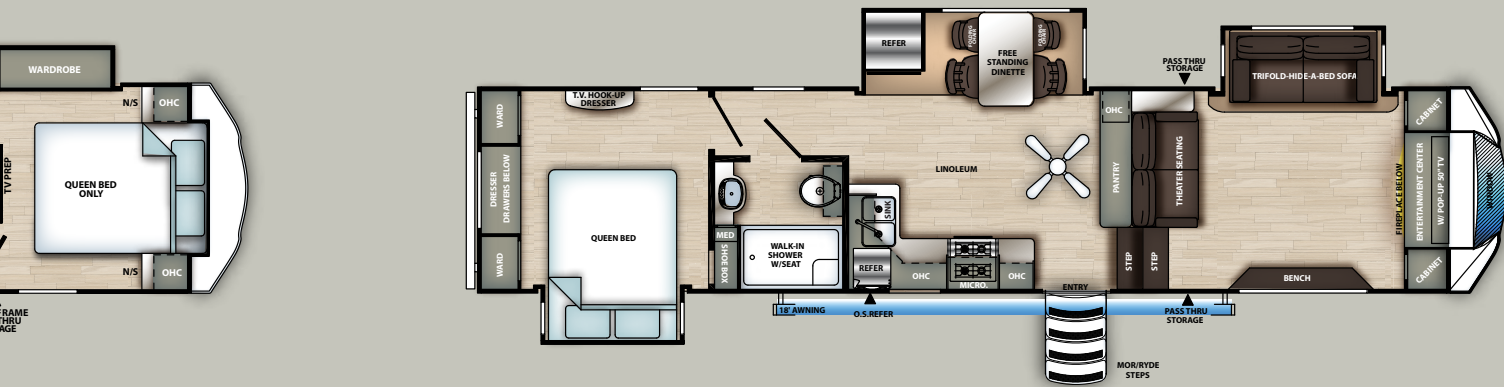
Specifications

Hitch	1,625	1,876	1,920	2,205
UVW	9,729	9,665	10,769	10,684
GVWR	12,729	12,665	13,769	13,684
Cargo	3,000	3,000	3,000	3,000
Length (Bumper to hitch, add 16" for overall length)	32' 10"	35' 0"	36' 11"	39' 3"
Height	13' 4"	13' 4"	13' 4"	13' 4"
Awning	14'	16'	21'	16'
Gray	60	104	134	104
Black	30	104	104	52
Fresh	50	50	50	50

3220RL



3550FL



# Sandpiper

**C-CLASS**



GVWR (Gross Vehicle Weight Rating) - is the maximum permissible weight of the unit when fully loaded. It includes all weights, inclusive of all fluids, cargo, optional equipment and accessories. For safety and product performance do NOT exceed the GVWR.

GAWR (Gross Axle Weight Rating) - is the maximum permissible weight, including cargo, fluids, optional equipment and accessories that can be safely supported by a combination of all axles.

UVW (Unloaded Vehicle Weight)\* - is the typical weight of the unit as manufactured at the factory. It includes all weight at the unit's axle(s) and tongue or pin and LP Gas. The UVW does not include cargo, fresh potable water, additional optional equipment or dealer installed accessories.

\*Estimated Average based on standard build optional equipment.

CCC (Cargo Carrying Capacity)\*\* - is the amount of weight available for fresh potable water, cargo, additional optional equipment and accessories. CCC is equal to GVWR minus UVW. Available CCC should accommodate fresh potable water (8.3 lbs per gallon). Before filling the fresh water tank, empty the black and gray tanks to provide for more cargo capacity.

\*\* Estimated average based on standard build optional equipment

Each Forest River RV is weighed at the manufacturing facility prior to shipping. A label identifying the unloaded vehicle weight of the actual unit and the cargo carrying capacity is applied to every Forest River RV prior to leaving our facilities.

The load capacity of your unit is designated by weight, not by volume, so you cannot necessarily use all available space when loading your unit.

All information contained in this brochure is believed to be accurate at the time of publication. However, during the model year, it may be necessary to make revisions and Forest River, Inc., reserves the right to make all such changes without notice, including prices, colors, materials, equipment and specifications as well as the addition of new models and the discontinuance of models shown in this brochure. Therefore, please consult with your Forest River dealer and confirm the existence of any materials, design or specifications that are material to your purchase decision.



**PRE-DELIVERY INSPECTION FACILITY**  
20,000 square feet of quality assurance. The bare essentials for a premium product. This state-of-the-art facility gives immediate daily feedback to production for quality assurance in every unit built.

WWW.KOACARECAMPS.ORG

**Fighting Cancer + Making Memories**

When a Forest River product is purchased a donation is made to Koa Care Camps. Care Camps supports more than 130 specialized summer camps throughout North America that provide a true camping experience to children with cancer and their siblings. These camps are provided at no charge to the affected families. Thank you for considering Forest River.

For more information about Care Camps visit [www.koacarecamps.org](http://www.koacarecamps.org)

**24/7 EMERGENCY  
ROADSIDE ASSISTANCE  
WITH VEHICLE PURCHASE\***

TOWING	WINCH-OUT
JUMP-STARTS	MOBILE MECHANIC
TIRE CHANGES	TECHNICAL SUPPORT
FLUID DELIVERY	DEALER LOCATOR
LOCKOUT SERVICE	SERVICES

\*VALID FOR 1 YEAR FROM DATE OF PURCHASE

**FREE MEMBERSHIP**  
to Forest River Owners' Group

[www.forestriverfrog.com](http://www.forestriverfrog.com)

CUSTOMER SATISFACTION

**FOREST RIVER**  
encourages you to

**BUY LOCAL**

PREFERENTIAL SERVICE | PRODUCT INFORMATION

[www.ForestRiverBuyLocal.com](http://www.ForestRiverBuyLocal.com)



**Learn More**  
Scan this barcode using a QR Reader on your smart phone to learn more about Forest River.



A Berkshire Hathaway company.

Forest River, Inc.  
55470 C.R. 1, Elkhart, IN 46515  
(574) 389-4600  
[www.forestriverinc.com/Sandpiper](http://www.forestriverinc.com/Sandpiper)  
[www.forestriveraccessories.com](http://www.forestriveraccessories.com)

YOUR LOCAL SANDPIPER DEALER